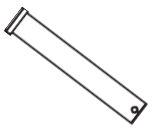


# CLEVIS PINS

785-392-3017 FAX 785.392.2845

REVISED 06-04  
www.huyett.com

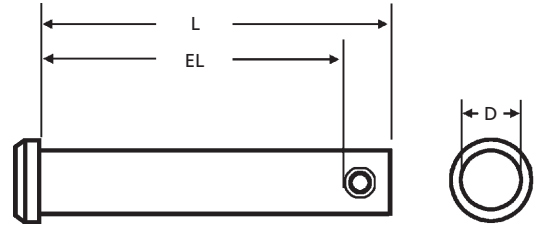
FOR NONFERROUS, SEE PAGE 12.



## CORNPICKER

### MANUFACTURER CROSS-REFERENCE

ITW/Bee-Leitzke	11	Pivot Point	CP
See also	MS20392		



CLP	Nominal (D)	Length (L)	Effective Length (EL)	WEIGHT Lbs. per 100 Pieces	MATERIAL			Use With
	DIAMETER	LENGTH			Plain "CLP-"	Zinc Clear "CLPZ-"	Zinc Yellow "CLPY-"	
-0187-0500	3/16	1/2	.359	0.56				BP-223
-0187-0593		19/32	.453	0.59				
-0187-0625		5/8	.484	0.62				
-0187-0750		3/4	.609	0.69				
-0187-0875		7/8	.734	0.81				
-0187-1000		1	.859	0.88				
-0187-1250		1-1/4	1.109	1.06				
-0187-1500		1-1/2	1.359	1.31				
-0187-1750		1-3/4	1.609	1.50				
-0187-2000		2	1.859	1.69				
-0187-2500	1/4	2-1/2	2.359	2.06				BP-213
-0187-3000		3	2.859	2.50				
-0250-0500		1/2	.359	0.94				
-0250-0625		5/8	.484	1.13				
-0250-0750		3/4	.609	1.38				
-0250-0796		51/64	.656	1.44				
-0250-0875		7/8	.734	1.50				
-0250-1000		1	.859	1.69				
-0250-1125		1-1/8	.984	1.81				
-0250-1250		1-1/4	1.109	2.00				
-0250-1375		1-3/8	1.234	2.19				
-0250-1500		1-1/2	1.359	2.31				
-0250-1625		1-5/8	1.484	2.50				
-0250-1750		1-3/4	1.609	2.69				
-0250-1875		1-7/8	1.734	2.81				
-0250-2000		2	1.859	3.00				
-0250-2125		2-1/8	1.984	3.19				
-0250-2250		2-1/4	2.109	3.31				
-0250-2375		2-3/8	2.234	3.50				
-0250-2437		2-7/16	2.296	3.63				
-0250-2500		2-1/2	2.359	3.69				
-0250-2625		2-5/8	2.484	3.80				
-0250-2750		2-3/4	2.609	4.00				
-0250-3000		3	2.859	4.50				
-0250-3250		3-1/4	3.109	4.75				
-0250-3500		3-1/2	3.359	5.00				
-0250-4000		4	3.859	5.88				
-0250-5000		5	4.859	7.00				

BRIDGE PINS BEGIN PAGE 72.

CLP	DESCRIPTION	GENERAL USE	HOW TO IDENTIFY	APPLICATION
	Solid pin with standard flat head that secures with a wire formed pin through a hole drilled in the opposite end. Clevis pins are used as a quick and secure fastener in place of bolts and rivets.	 COMMON	<ol style="list-style-type: none"> <li>1. Verify flat head pin with hole at opposite end.</li> <li>2. Measure diameter (D).</li> <li>3. Confirm effective length (EL) and length (L).</li> <li>4. Find the part in the chart above.</li> </ol> <p><b>TYPICAL PART NUMBER SEQUENCE:</b> CLPZ-0187-0750 is a 3/16" x 3/4" zinc clear clevis pin.</p>	 Secured with a ring cotter pin.

PERFORMANCE RESULTS VARY. YOUR PIN SELECTION SHOULD BE MADE BASED ON INDIVIDUAL APPLICATION.

Use With						
	Page 54	Page 72	Page 88	Page 95	Page 95	Page 94

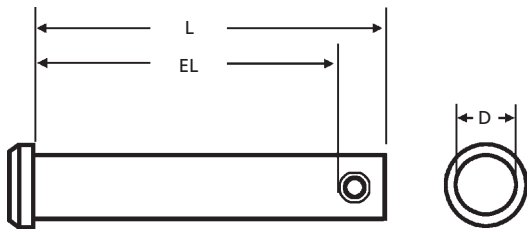
	ADDITIONAL TECHNICAL DATA ON PAGE 21.
--	---

CLPM		METRIC Page 186
------	--	--------------------

**MOST SIZES AVAILABLE IMMEDIATELY • \$2 LINE REQUESTED • CALL PLANT FOR QUANTITY DISCOUNTS**

FOR NONFERROUS, SEE PAGE 12.

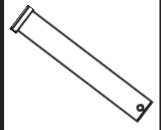
BOX 232 • MINNEAPOLIS, KS • 67467



## CORNPICKER

### MANUFACTURER CROSS-REFERENCE

ITW/Bee-Leitzke	11	Pivot Point	CP
See also	MS20392		



CLP	Nominal (D)	Length (L)	Effective Length (EL)	WEIGHT Lbs. per 100 Pieces	MATERIAL			Use With
	DIAMETER	LENGTH			Plain "CLP-"	Zinc Clear "CLPZ-"	Zinc Yellow "CLPY-"	
-0312-0500	5/16	1/2	.281	1.38				BP-213
-0312-0750		3/4	.531	1.94				
-0312-0875		7/8	.656	2.13				
-0312-0968		31/32	.750	2.38				
-0312-1000		1	.781	2.44				
-0312-1125		1-1/8	.906	2.69				
-0312-1187		1-3/16	.968	2.81				
-0312-1250		1-1/4	1.031	3.00				
-0312-1375		1-3/8	1.156	3.25				
-0312-1500		1-1/2	1.281	3.50				
-0312-1625		1-5/8	1.406	3.75				
-0312-1687		1-11/16	1.468	3.88				
-0312-1750		1-3/4	1.531	4.00				
-0312-1812		1-13/16	1.593	4.25				
-0312-1875		1-7/8	1.656	4.50				
-0312-1937		1-15/16	1.718	4.65				
-0312-2000		2	1.781	4.80				
-0312-2125		2-1/8	1.906	5.00				
-0312-2187		2-3/16	1.968	5.15				
-0312-2250		2-1/4	2.031	5.25				
-0312-2375		2-3/8	2.156	5.50				
-0312-2500		2-1/2	2.281	5.75				
-0312-2625		2-5/8	2.406	6.00				
-0312-2750		2-3/4	2.531	6.29				
-0312-2812		2-13/16	2.593	6.43				
-0312-2875		2-7/8	2.656	6.58				
-0312-3000		3	2.781	6.88				
-0312-3125		3-1/8	2.906	7.17				
-0312-3250		3-1/4	3.031	7.45				
-0312-3500		3-1/2	3.281	7.75				
-0312-3750		3-3/4	3.531	8.00				
-0312-4000		4	3.781	8.75				
-0312-6000		6	5.781	13.00				
-0375-0750	3/8	3/4	.515	2.88				BP-213
-0375-1000		1	.765	3.70				
-0375-1093		1-3/32	.859	3.94				
-0375-1125		1-1/8	.890	4.06				
-0375-1250		1-1/4	1.015	4.25				
-0375-1312		1-5/16	1.078	4.50				

BRIDGE PINS BEGIN PAGE 72.

CLP	DESCRIPTION	GENERAL USE	HOW TO IDENTIFY	APPLICATION
	Solid pin with standard flat head that secures with a wire formed pin through a hole drilled in the opposite end. Clevis pins are used as a quick and secure fastener in place of bolts and rivets.	COMMON	<ol style="list-style-type: none"> <li>1. Verify flat head pin with hole at opposite end.</li> <li>2. Measure diameter (D).</li> <li>3. Confirm effective length (EL) and length (L).</li> <li>4. Find the part in the chart above.</li> </ol> <p><b>TYPICAL PART NUMBER SEQUENCE:</b> CLPZ-0187-0750 is a 3/16" x 3/4" zinc clear clevis pin.</p>	Hook connector. 

PERFORMANCE RESULTS VARY. YOUR PIN SELECTION SHOULD BE MADE BASED ON INDIVIDUAL APPLICATION.



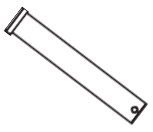
**MOST SIZES AVAILABLE IMMEDIATELY • \$2 LINE REQUESTED • CALL PLANT FOR QUANTITY DISCOUNTS**

# CLEVIS PINS

785-392-3017 FAX 785.392.2845

REVISED 06-04  
www.huyett.com

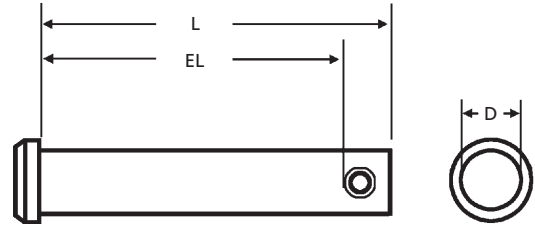
FOR NONFERROUS, SEE PAGE 12.



## CORNPICKER

### MANUFACTURER CROSS-REFERENCE

ITW/Bee-Leitzke	11	Pivot Point	CP
See also	MS20392		



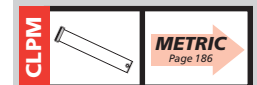
CLP	Nominal (D)	Length (L)	Effective Length (EL)	WEIGHT Lbs. per 100 Pieces	MATERIAL			Use With
	DIAMETER	LENGTH			Plain "CLP-"	Zinc Clear "CLPZ-"	Zinc Yellow "CLPY-"	
-0375-1375	3/8	1-3/8	1.140	4.75				BP-213
-0375-1500		1-1/2	1.265	5.25				
-0375-1625		1-5/8	1.390	5.50				
-0375-1750		1-3/4	1.515	5.75				
-0375-1875		1-7/8	1.640	6.25				
-0375-2000		2	1.765	6.75				
-0375-2125		2-1/8	1.890	7.00				
-0375-2250		2-1/4	2.015	7.25				
-0375-2359		2-23/64	2.125	7.75				
-0375-2375		2-3/8	2.140	8.00				
-0375-2500		2-1/2	2.265	8.25				
-0375-2625		2-5/8	2.390	8.75				
-0375-2750		2-3/4	2.515	9.38				
-0375-3000		3	2.765	9.75				
-0375-3250		3-1/4	3.015	10.50				
-0375-3500		3-1/2	3.265	11.25				
-0375-3750		3-3/4	3.515	12.00				
-0375-4000		4	3.765	12.75				
-0375-4500		4-1/2	4.265	14.25				
-0375-5000		5	4.765	15.75				
-0375-5500		5-1/2	5.265	17.25				
-0375-6125		6-1/8	5.890	19.25				
-0437-1000	7/16	1	.765	5.25				BP-211
-0437-1234		1-15/64	1.000	6.50				
-0437-1250		1-1/4	1.015	6.50				
-0437-1500		1-1/2	1.265	7.25				
-0437-1625		1-5/8	1.390	7.75				
-0437-1750		1-3/4	1.515	8.25				
-0437-2000		2	1.765	9.25				
-0437-2250		2-1/4	2.015	10.25				
-0437-2375		2-3/8	2.140	10.75				
-0437-2500		2-1/2	2.265	11.25				
-0437-2625		2-5/8	2.390	12.00				
-0437-2750		2-3/4	2.515	12.50				
-0437-3000		3	2.765	13.00				
-0437-3500		3-1/2	3.265	15.50				
-0437-4000		4	3.765	17.00				

BRIDGE PINS BEGIN PAGE 72.

DESCRIPTION	GENERAL USE	HOW TO IDENTIFY	APPLICATION
<b>CLP</b> Solid pin with standard flat head that secures with a wire formed pin through a hole drilled in the opposite end. Clevis pins are used as a quick and secure fastener in place of bolts and rivets. <b>CORNPICKER</b>	 <b>COMMON</b>	1. Verify flat head pin with hole at opposite end. 2. Measure diameter (D). 3. Confirm effective length (EL) and length (L). 4. Find the part in the chart above. <b>TYPICAL PART NUMBER SEQUENCE:</b> <b>CLPZ-0187-0750</b> <i>is a 3/16" x 3/4" zinc clear clevis pin.</i>	 As a swiveling hitch.

PERFORMANCE RESULTS VARY. YOUR PIN SELECTION SHOULD BE MADE BASED ON INDIVIDUAL APPLICATION.

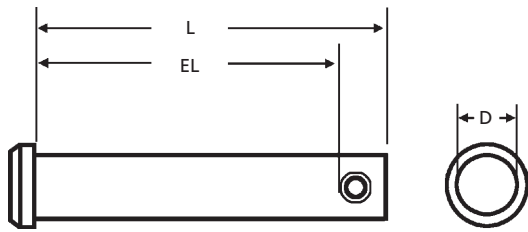
Use With						
	Page 54	Page 72	Page 88	Page 95	Page 95	Page 94



**MOST SIZES AVAILABLE IMMEDIATELY • \$2 LINE REQUESTED • CALL PLANT FOR QUANTITY DISCOUNTS**

FOR NONFERROUS, SEE PAGE 12.

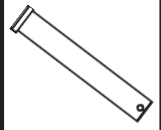
BOX 232 • MINNEAPOLIS, KS • 67467



## CORNPICKER



### MANUFACTURER CROSS-REFERENCE

ITW/Bee-Leitzke	11	Pivot Point	CP
See also	MS20392		



CLP	Nominal (D)	Length (L)	Effective Length (EL)	WEIGHT Lbs. per 100 Pieces	MATERIAL			Use With
	DIAMETER	LENGTH			Plain "CLP."	Zinc Clear "CLPZ."	Zinc Yellow "CLPY."	
-0500-1000	1/2	.491/.496	1	.765				BP-211
-0500-1250			1-1/4	1.015				
-0500-1375			1-3/8	1.140				
-0500-1421			1-27/64	1.187				
-0500-1500			1-1/2	1.265				
-0500-1750			1-3/4	1.515				
-0500-2000			2	1.765				
-0500-2250			2-1/4	2.015				
-0500-2500			2-1/2	2.265				
-0500-2625			2-5/8	2.390				
-0500-2750			2-3/4	2.515				
-0500-3000			3	2.765				
-0500-3500			3-1/2	3.265				
-0500-4000			4	3.765				
-0500-4500			4-1/2	4.265				
-0500-5000			5	4.765				
-0500-6000			6	5.765				
-0562-2000	9/16	.553/.558	2	1.765				BP-211
-0562-2500			2-1/2	2.265				
-0562-3000			3	2.765				
-0562-4000			4	3.765				
-0625-1250	5/8	.616/.621	1-1/4	1.015				BP-211
-0625-1500			1-1/2	1.265				
-0625-1750			1-3/4	1.515				
-0625-2000			2	1.765				
-0625-2250			2-1/4	2.015				
-0625-2500			2-1/2	2.265				
-0625-3000			3	2.765				
-0625-3500			3-1/2	3.265				
-0625-4000			4	3.765				
-0625-4500			4-1/2	4.265				
-0625-5000			5	4.765				
-0625-5500			5-1/2	5.265				
-0625-6000	3/4	.741/.746	6	5.765				BP-211
-0750-2000			2	1.765				
-0750-2500			2-1/2	2.265				
-0750-2750			2-3/4	2.515				
-0750-3000			3	2.765				
-0750-3500			3-1/2	3.265				

BRIDGE PINS BEGIN PAGE 72.

CLP	DESCRIPTION	GENERAL USE	HOW TO IDENTIFY	APPLICATION
	Solid pin with standard flat head that secures with a wire formed pin through a hole drilled in the opposite end. Clevis pins are used as a quick and secure fastener in place of bolts and rivets.	 COMMON	<ol style="list-style-type: none"> <li>1. Verify flat head pin with hole at opposite end.</li> <li>2. Measure diameter (D).</li> <li>3. Confirm effective length (EL) and length (L).</li> <li>4. Find the part in the chart above.</li> </ol> <p><b>TYPICAL PART NUMBER SEQUENCE:</b> CLPZ-0187-0750 is a 3/16" x 3/4" zinc clear clevis pin.</p>	 Secures a spring.

PERFORMANCE RESULTS VARY. YOUR PIN SELECTION SHOULD BE MADE BASED ON INDIVIDUAL APPLICATION.



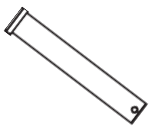
**MOST SIZES AVAILABLE IMMEDIATELY • \$2 LINE REQUESTED • CALL PLANT FOR QUANTITY DISCOUNTS**

# CLEVIS PINS

785-392-3017 FAX 785.392.2845

REVISED 06-04  
www.huyett.com

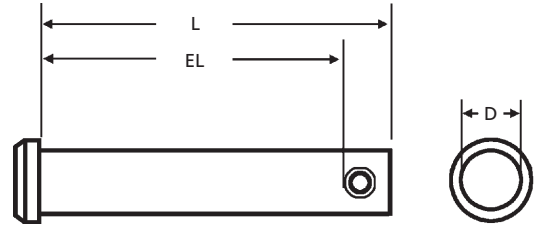
FOR NONFERROUS, SEE PAGE 12.




## CORNPICKER

### MANUFACTURER CROSS-REFERENCE

ITW/Bee-Leitzke	11	Pivot Point	CP
See also	MS20392		



CLP	Nominal (D)		Length (L)	Effective Length (EL)	WEIGHT  Lbs. per 100 Pieces	MATERIAL			Use With										
	DIAMETER		LENGTH	Plain "CLP-"		Zinc Clear "CLPZ-"	Zinc Yellow "CLPY-"												
-0750-3750	3/4	.741/.746	3-3/4	3.515	+ .020/- .000				BP-211										
-0750-4000			4	3.765						53.75									
-0750-4500			4-1/2	4.265						60.00									
-0750-5000			5	4.765						65.25									
-0750-5500			5-1/2	5.265						72.65									
-0750-6000			6	5.765						78.80									
-0750-6500	7/8	.866/.871	6-1/2	6.265					85.00				BP-210						
-0875-2000			2	1.703					38.13										
-0875-2500			2-1/2	2.203					47.50										
-0875-2750			2-3/4	2.453					52.50										
-0875-3000			3	2.703					55.25										
-0875-3500			3-1/2	3.203					65.63										
-0875-4000			4	3.703					73.75										
-0875-4500			4-1/2	4.203					82.13										
-0875-5000			5	4.703					90.50										
-0875-6000			6	5.703					105.25										
-1000-2000			1	.991/.996					2					1.703	53.00				BP-210
-1000-2250									2-1/4					1.953	58.75				
-1000-2500	2-1/2	2.203							63.00										
-1000-2625	2-5/8	2.312							67.50										
-1000-2750	2-3/4	2.453							70.00										
-1000-3000	3	2.703							75.63										
-1000-3250	3-1/4	2.953							81.00										
-1000-3500	3-1/2	3.203							86.88										
-1000-4000	4	3.703							97.50										
-1000-4500	4-1/2	4.203							108.12										
-1000-5000	5	4.703							119.69										
-1000-5500	5-1/2	5.203							130.78										
-1000-6000	6	5.703			141.88														
-1000-7000	7	6.703			165.35														
-1000-8000	8	7.703			188.82														
-1000-9000	9	8.703			212.31														
-1125-3000	1-1/8	1.105/1.125			3	2.375	100.00							BP-208					
-1125-4000					4	3.375	130.00												
-1125-5000			5	4.375	160.00														
-1125-6000			6	5.375	190.00														
-1125-8000			8	7.375	250.00														
-1125-9000			9	8.375	280.00														

BRIDGE PINS BEGIN PAGE 72

BRIDGE PINS BEGIN PAGE 72.

CLP	DESCRIPTION	GENERAL USE	HOW TO IDENTIFY	APPLICATION
	Solid pin with standard flat head that secures with a wire formed pin through a hole drilled in the opposite end. Clevis pins are used as a quick and secure fastener in place of bolts and rivets.	 COMMON	<ol style="list-style-type: none"> <li>1. Verify flat head pin with hole at opposite end.</li> <li>2. Measure diameter (D).</li> <li>3. Confirm effective length (EL) and length (L).</li> <li>4. Find the part in the chart above.</li> </ol> <p><b>TYPICAL PART NUMBER SEQUENCE:</b> CLPZ-0187-0750 is a 3/16" x 3/4" zinc clear clevis pin.</p>	 Connect a tow bar.
	<b>CORNPICKER</b>			

PERFORMANCE RESULTS VARY. YOUR PIN SELECTION SHOULD BE MADE BASED ON INDIVIDUAL APPLICATION.

Use With						
	Page 54	Page 72	Page 88	Page 95	Page 95	Page 94

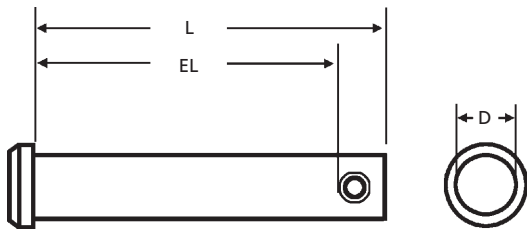
	<b>ADDITIONAL TECHNICAL DATA ON PAGE 21.</b>
--	--

CLPM		<b>METRIC</b> Page 186
------	--	---------------------------

**MOST SIZES AVAILABLE IMMEDIATELY • \$2 LINE REQUESTED • CALL PLANT FOR QUANTITY DISCOUNTS**

FOR NONFERROUS, SEE PAGE 12.

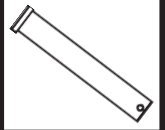
BOX 232 • MINNEAPOLIS, KS • 67467



## CORNPICKER

### MANUFACTURER CROSS-REFERENCE

ITW/Bee-Leitzke	11	Pivot Point	CP
See also	MS20392		



CLP	Nominal (D)	Length (L)	Effective Length (EL)	WEIGHT	MATERIAL			Use With
	DIAMETER	LENGTH		Lbs. per 100 Pieces	Plain "CLP-"	Zinc Clear "CLPZ-"	Zinc Yellow "CLPY-"	
-1250-3000	1-1/4	1.230/1.250	3	2.375				BP-208
-1250-4000			4	3.375				
-1250-5000			5	4.375				
-1250-6000			6	5.375				
-1250-8000			8	7.375				
-1250-9000			9	8.375				BP-235
-1375-3000	1-3/8	1.355/1.375	3	2.375				
-1375-4000			4	3.375				
-1375-5000			5	4.375				
-1375-6000			6	5.375				
-1375-9000			9	8.375				BP-235
-1500-3000	1-1/2	1.480/1.500	3	2.375				
-1500-4000			4	3.375				
-1500-5000			5	4.375				
-1500-6000			6	5.375				
-1500-9000			9	8.375				CP-0250-2250
-1625-3000	1-5/8	1.605/1.625	3	2.375				
-1625-4000			4	3.375				
-1625-5000			5	4.375				
-1625-6000			6	5.375				
-1625-9000			9	8.375				CP-0250-2500
-1750-3000	1-3/4	1.730/1.750	3	2.375				
-1750-4000			4	3.375				
-1750-5000			5	4.375				
-1750-6000			6	5.375				
-1750-9000			9	8.375				CP-0250-2500
-1875-3000	1-7/8	1.855/1.875	3	2.375				
-1875-4000			4	3.375				
-1875-5000			5	4.375				
-1875-6000			6	5.375				
-1875-9000			9	8.375				CP-0250-3000
-2000-3000	2	1.980/2.000	3	2.375				
-2000-4000			4	3.375				
-2000-5000			5	4.375				
-2000-6000			6	5.375				
-2000-9000			9	8.375				

+ .020/- .000

BRIDGE PINS BEGIN PAGE 72, COTTER PINS BEGIN PAGE 54.

DESCRIPTION	GENERAL USE	HOW TO IDENTIFY	APPLICATION
<b>CLP</b> Solid pin with standard flat head that secures with a wire formed pin through a hole drilled in the opposite end. Clevis pins are used as a quick and secure fastener in place of bolts and rivets. <b>CORNPICKER</b>	 COMMON	1. Verify flat head pin with hole at opposite end. 2. Measure diameter (D). 3. Confirm effective length (EL) and length (L). 4. Find the part in the chart above. <b>TYPICAL PART NUMBER SEQUENCE:</b> <b>CLPZ-0187-0750</b> is a 3/16" x 3/4" zinc clevis pin.	 As a positioning point.

PERFORMANCE RESULTS VARY. YOUR PIN SELECTION SHOULD BE MADE BASED ON INDIVIDUAL APPLICATION.

Use With						
	Page 54	Page 72	Page 88	Page 95	Page 95	Page 94

ASSORTMENTS BEGIN
Page 286

CLPM		METRIC Page 186
------	--	--------------------

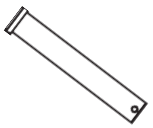
**MOST SIZES AVAILABLE IMMEDIATELY • \$2 LINE REQUESTED • CALL PLANT FOR QUANTITY DISCOUNTS**

# NONFERROUS CLEVIS PINS

785-392-3017 FAX 785.392.2845

REVISED 06-04  
www.huyett.com

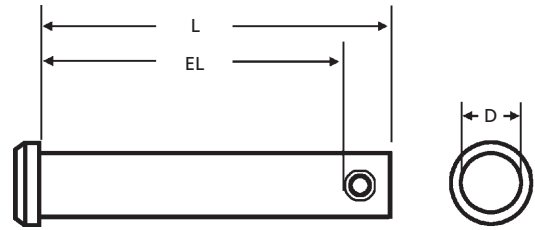
FOR CARBON STEEL, SEE PAGE 6.



## CORNPICKER


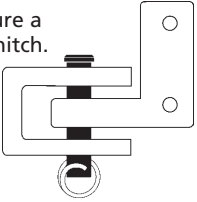
### MANUFACTURER CROSS-REFERENCE

ITW/Bee-Leitzke	11	Pivot Point	CP
See also	MS20392		



CLP	Nominal (D)	Length (L)	Effective Length (EL)	WEIGHT Lbs. per 100 Pieces	MATERIAL				Use With
	DIAMETER	LENGTH			Stainless "CLPS-"	Marine Grade* "CLPS6-"	Aluminum "CLPA-"	Brass "CLPB-"	
-0187-0500 -0187-0625 -0187-0750 -0187-0875 -0187-1000 -0187-1250 -0187-1500 -0187-1750 -0187-2000 -0187-2500 -0187-3000	3/16	.181/.186	1/2	.359					BPS-223
			5/8	.484					
			3/4	.609					
			7/8	.734					
			1	.859					
			1-1/4	1.109					
			1-1/2	1.359					
			1-3/4	1.609					
			2	1.859					
			2-1/2	2.359					
			3	2.859					
-0250-0500 -0250-0625 -0250-0750 -0250-0875 -0250-1000 -0250-1125 -0250-1250 -0250-1375 -0250-1500 -0250-1625 -0250-1750 -0250-1875 -0250-2000 -0250-2250 -0250-2375 -0250-2500 -0250-2750 -0250-3000 -0250-4000	1/4	.243/.248	1/2	.359					BPS-213
			5/8	.484					
			3/4	.609					
			7/8	.734					
			1	.859					
			1-1/8	.984					
			1-1/4	1.109					
			1-3/8	1.234					
			1-1/2	1.359					
			1-5/8	1.484					
			1-3/4	1.609					
			1-7/8	1.734					
			2	1.859					
			2-1/4	2.109					
			2-3/8	2.234					
			2-1/2	2.359					
			2-3/4	2.609					
			3	2.859					
			4	3.859					

\* 316 Stainless Steel

CLP	DESCRIPTION	GENERAL USE	HOW TO IDENTIFY	APPLICATION
	G.L. Huyett is the only manufacturer that offers 316 stainless steel marine grade from stock. 316 is more corrosion resistant versus standard stainless grades.	 COMMON	<ol style="list-style-type: none"> <li>1. Verify flat head pin with hole at opposite end.</li> <li>2. Measure diameter (D).</li> <li>3. Confirm effective length (EL) and length (L).</li> <li>4. Find the part in the chart above.</li> </ol> <p><b>TYPICAL PART NUMBER SEQUENCE:</b> CLPS-0187-0500 is a 3/16" x 1/2" stainless clevis pin.</p>	To secure a trailer hitch. 

PERFORMANCE RESULTS VARY. YOUR PIN SELECTION SHOULD BE MADE BASED ON INDIVIDUAL APPLICATION.

Use With						
	Page 54	Page 72	Page 88	Page 95	Page 95	Page 94

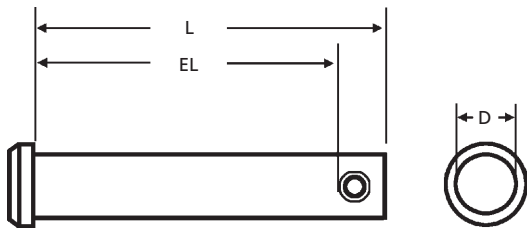
ASSORTMENTS BEGIN
 Page 286

ADDITIONAL TECHNICAL DATA ON PAGE 21.
---------------------------------------

**MOST SIZES AVAILABLE IMMEDIATELY • \$2 LINE REQUESTED • CALL PLANT FOR QUANTITY DISCOUNTS**

FOR CARBON STEEL, SEE PAGE 6.

BOX 232 • MINNEAPOLIS, KS • 67467



## CORNPICKER

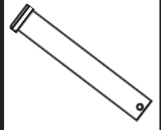
### MANUFACTURER CROSS-REFERENCE

ITW/Bee-Leitzke

11

Pivot Point

CP



CLP	Nominal (D)	Length (L)	Effective Length (EL)	WEIGHT Lbs. per 100 Pieces	MATERIAL				Use With
	DIAMETER	LENGTH			Stainless "CLPS-"	Marine Grade* "CLPS6-"	Aluminum "CLPA-"	Brass "CLPB-"	
-0312-0500	5/16	1/2	.281	1.38					BPS-213
-0312-0750		3/4	.531	1.94					
-0312-0875		7/8	.656	2.13					
-0312-1000		1	.781	2.44					
-0312-1125		1-1/8	.906	2.69					
-0312-1250		1-1/4	1.031	3.00					
-0312-1375		1-3/8	1.156	3.25					
-0312-1500		1-1/2	1.281	3.50					
-0312-1625		1-5/8	1.406	3.75					
-0312-1750		1-3/4	1.531	4.00					
-0312-1812		1-13/16	1.593	4.25					
-0312-1875		1-7/8	1.656	4.50					
-0312-2000		2	1.781	4.80					
-0312-2125		2-1/8	1.906	5.00					
-0312-2250		2-1/4	2.031	5.25					
-0312-2375		2-3/8	2.156	5.50					
-0312-2500		2-1/2	2.281	5.75					
-0312-2625		2-5/8	2.406	6.00					
-0312-2750		2-3/4	2.531	6.29					
-0312-2875		2-7/8	2.656	6.58					
-0312-3000		3	2.781	6.88					
-0312-3125		3-1/8	2.906	7.17					
-0312-3250		3-1/4	3.031	7.45					
-0312-3500		3-1/2	3.281	7.75					
-0312-4000		4	3.781	8.75					
-0375-0750	3/8	3/4	.515	2.88					BPS-213
-0375-1000		1	.765	3.70					
-0375-1125		1-1/8	.890	4.06					
-0375-1250		1-1/4	1.015	4.25					
-0375-1312		1-5/16	1.078	4.50					

\* 316 Stainless Steel

CLP	DESCRIPTION	GENERAL USE	HOW TO IDENTIFY	APPLICATION
	G.L. Huyett is the only manufacturer that offers 316 stainless steel marine grade from stock. 316 is more corrosion resistant versus standard stainless grades.	COMMON	<ol style="list-style-type: none"> <li>1. Verify flat head pin with hole at opposite end.</li> <li>2. Measure diameter (D).</li> <li>3. Confirm effective length (EL) and length (L).</li> <li>4. Find the part in the chart above.</li> </ol> <p><b>TYPICAL PART NUMBER SEQUENCE:</b> CLPS6-0312-0500 is a 5/16" x 3/4" marine grade 316 stainless clevis pin.</p>	<p>To fasten a lid.</p>

PERFORMANCE RESULTS VARY. YOUR PIN SELECTION SHOULD BE MADE BASED ON INDIVIDUAL APPLICATION.



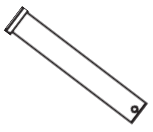
**MOST SIZES AVAILABLE IMMEDIATELY • \$2 LINE REQUESTED • CALL PLANT FOR QUANTITY DISCOUNTS**

# NONFERROUS CLEVIS PINS

785-392-3017 FAX 785.392.2845

REVISED 06-04  
www.huyett.com

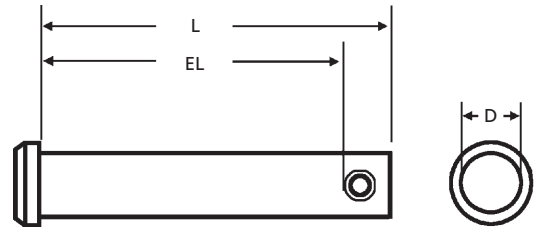
FOR CARBON STEEL, SEE PAGE 6.



## CORNPICKER


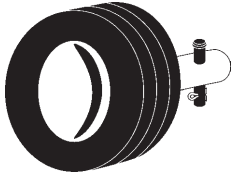
### MANUFACTURER CROSS-REFERENCE

ITW/Bee-Leitzke	11	Pivot Point	CP
See also	MS20392		



CLP	Nominal (D)	Length (L)	Effective Length (EL)	WEIGHT Lbs. per 100 Pieces	MATERIAL				Use With
	DIAMETER	LENGTH			Stainless "CLPS-"	Marine Grade* "CLPS6-"	Aluminum "CLPA-"	Brass "CLPB-"	
-0375-1375	3/8	1-3/8	1.140	4.75					BPS-213
-0375-1500		1-1/2	1.265	5.25					
-0375-1625		1-5/8	1.390	5.50					
-0375-1750		1-3/4	1.515	5.75					
-0375-1875		1-7/8	1.640	6.25					
-0375-2000		2	1.765	6.75					
-0375-2250		2-1/4	2.015	7.25					
-0375-2375		2-3/8	2.140	8.00					
-0375-2500		2-1/2	2.265	8.25					
-0375-2625		2-5/8	2.390	8.75					
-0375-2750		2-3/4	2.515	9.38					
-0375-3000		3	2.765	9.75					
-0375-3250		3-1/4	3.015	10.50					
-0375-3500		3-1/2	3.265	11.25					
-0375-3750		3-3/4	3.515	12.00					
-0375-4000		4	3.765	12.75					
-0437-1000	7/16	1	.765	5.25					BPS-211
-0437-1250		1-1/4	1.015	6.50					
-0437-1500		1-1/2	1.265	7.25					
-0437-1625		1-5/8	1.390	7.75					
-0437-1750		1-3/4	1.515	8.25					
-0437-2000		2	1.765	9.25					
-0437-2250		2-1/4	2.015	10.25					
-0437-2375		2-3/8	2.140	10.75					
-0437-2500		2-1/2	2.265	11.25					
-0437-2625		2-5/8	2.390	12.00					
-0437-2750		2-3/4	2.515	12.50					
-0437-3000		3	2.765	13.00					
-0437-3500		3-1/2	3.265	15.50					
-0437-4000		4	3.765	17.00					

\* 316 Stainless Steel

CLP	DESCRIPTION	GENERAL USE	HOW TO IDENTIFY	APPLICATION
	G.L. Huyett is the only manufacturer that offers 316 stainless steel marine grade from stock. 316 is more corrosion resistant versus standard stainless grades.	 COMMON	<ol style="list-style-type: none"> <li>1. Verify flat head pin with hole at opposite end.</li> <li>2. Measure diameter (D).</li> <li>3. Confirm effective length (EL) and length (L).</li> <li>4. Find the part in the chart above.</li> </ol> <p><b>TYPICAL PART NUMBER SEQUENCE:</b> CLPA-0375-1375 is a 3/8" x 1-3/8" aluminum clevis pin.</p>	 As a light duty axle.

PERFORMANCE RESULTS VARY. YOUR PIN SELECTION SHOULD BE MADE BASED ON INDIVIDUAL APPLICATION.

Use With						
	Page 54	Page 72	Page 88	Page 95	Page 95	Page 94

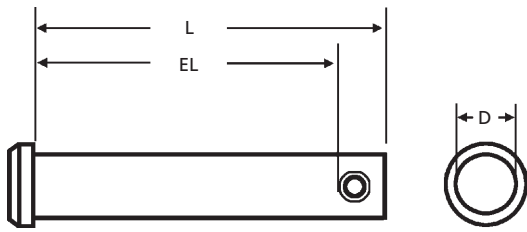
ASSORTMENTS BEGIN
 Page 286

ADDITIONAL TECHNICAL DATA ON PAGE 21.
---------------------------------------

MOST SIZES AVAILABLE IMMEDIATELY • \$2 LINE REQUESTED • CALL PLANT FOR QUANTITY DISCOUNTS

FOR CARBON STEEL, SEE PAGE 6.

BOX 232 • MINNEAPOLIS, KS • 67467



## CORNPICKER

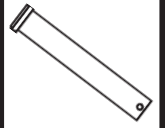
### MANUFACTURER CROSS-REFERENCE

ITW/Bee-Leitzke

11

Pivot Point

CP



CLP	Nominal (D)	Length (L)	Effective Length (EL)	WEIGHT	MATERIAL				Use With
	DIAMETER	LENGTH		Lbs. per 100 Pieces	Stainless "CLPS-"	Marine Grade* "CLPS6-"	Aluminum "CLPA-"	Brass "CLPB-"	
-0500-1000	1/2	.491/.496	1	.765					BPS-211
-0500-1250			1-1/4	1.015					
-0500-1375			1-3/8	1.140					
-0500-1500			1-1/2	1.265					
-0500-1750			1-3/4	1.515					
-0500-2000			2	1.765					
-0500-2250			2-1/4	2.015					
-0500-2500			2-1/2	2.265					
-0500-2750			2-3/4	2.515					
-0500-3000			3	2.765					
-0500-3500			3-1/2	3.265					
-0500-4000			4	3.765					
-0500-4500			4-1/2	4.265					
-0500-5000			5	4.765					
-0625-1500	5/8	.616/.621	1-1/2	1.265					BPS-211
-0625-1750			1-3/4	1.515					
-0625-2000			2	1.765					
-0625-2250			2-1/4	2.015					
-0625-2500			2-1/2	2.265					
-0625-3000			3	2.765					
-0625-3500			3-1/2	3.265					
-0750-2000	3/4	.741/.746	2	1.765					BPS-211
-0750-2500			2-1/2	2.265					
-0750-2750			2-3/4	2.515					
-0750-3000			3	2.765					
-0750-3500			3-1/2	3.265					
-0750-3750			3-3/4	3.515					
-0750-4000			4	3.765					
-0750-4500			4-1/2	4.265					
-0750-5000			5	4.765					

\* 316 Stainless Steel

DESCRIPTION	GENERAL USE	HOW TO IDENTIFY	APPLICATION
<p>G.L. Huyett is the only manufacturer that offers 316 stainless steel marine grade from stock. 316 is more corrosion resistant versus standard stainless grades.</p> <p><b>CORNPICKER</b></p>	<p>COMMON</p>	<ol style="list-style-type: none"> <li>1. Verify flat head pin with hole at opposite end.</li> <li>2. Measure diameter (D).</li> <li>3. Confirm effective length (EL) and length (L).</li> <li>4. Find the part in the chart above.</li> </ol> <p><b>TYPICAL PART NUMBER SEQUENCE:</b>  <b>CLPB-0500-1000</b>  is a 1/2" x 1" brass clevis pin.</p>	<p>As a spring retainer.</p>

PERFORMANCE RESULTS VARY. YOUR PIN SELECTION SHOULD BE MADE BASED ON INDIVIDUAL APPLICATION.



### ASSORTMENTS BEGIN



Page 286

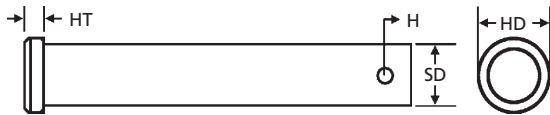


Marine Grade in stock

**MOST SIZES AVAILABLE IMMEDIATELY • \$2 LINE REQUESTED • CALL PLANT FOR QUANTITY DISCOUNTS**

# **ADDITIONAL TECHNICAL DATA**

BOX 232 • MINNEAPOLIS, KS • 67467



## **CORNPICKER PINS**

### **MANUFACTURER CROSS-REFERENCE**

ITW/Bee-Leitzke	11	Pivot Point	CP
-----------------	----	-------------	----

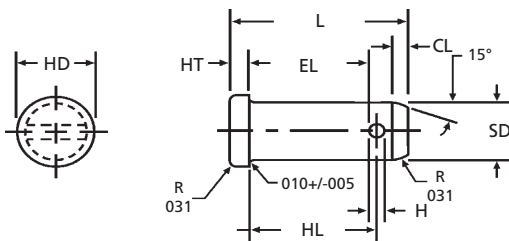


Nominal Diameter	Hole Size* (H)	Head Diameter (HD)	Head Thickness (HT)	Shank Diameter (SD)
3/16"	3/32"	.320/.302	.070/.052	.186/.181
1/4"	3/32"	.380/.365	.100/.084	.248/.243
5/16"	9/64"	.440/.428	.100/.084	.311/.306
3/8"	5/32"	.510/.490	.130/.115	.373/.368
7/16"	5/32"	.570/.552	.160/.146	.436/.431
1/2"	5/32"	.630/.615	.160/.146	.496/.491
9/16"	5/32"	.820/.802	.210/.193	.558/.553
5/8"	5/32"	.820/.802	.210/.193	.621/.616
3/4"	5/32"	.940/.928	.260/.240	.746/.741
7/8"	13/64"	1.040/1.020	.320/.302	.871/.866
1"	13/64"	1.190/1.178	.350/.334	.996/.991
1-1/8"	1/4"	1.395/1.355	.402/.320	1.125/1.105
1-1/4"	1/4"	1.500/1.355	.402/.320	1.250/1.230
1-3/8"	1/4"	1.770/1.730	.527/.437	1.375/1.355
1-1/2"	1/4"	2.020/1.980	.590/.500	1.500/1.480
1-5/8"	1/4"	2.020/1.980	.590/.500	1.625/1.605
1-3/4"	1/4"	2.270/2.230	.590/.500	1.750/1.730
1-7/8"	1/4"	2.270/2.230	.590/.500	1.875/1.855
2"	1/4"	2.395/2.355	.590/.500	2.000/1.980

\* Holes chamfered or burr free

\*\* New hole size

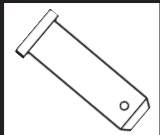
## **MS20392**



## **KEY HIGHLIGHTS OF MS20392**

### **MANUFACTURER CROSS-REFERENCE**

Pivot Point	
-------------	--



### **MATERIAL (Please Specify)**

**STEEL ALLOY:** UNS G40370 (ANSI 4037) per AMS6300 or UNSG41300 (ANSI 4130) per MIL-S-6758 or UNS 86300 (ANSI 8630) per MIL-S-6050 or UNS G87400 (ANSI 8740) per MIL-S-6049

**CORROSION RESISTANT STEEL:** (CRES) (PH13-BMO) - UNS S13800 9AISI 13800 per AMS 5629

**TITANIUM ALLOY:** (TI-6A1-4V) - UNS R56400 per MIL-T-9047

### **FINISH**

**STEEL ALLOY:** Cadmium plated in accordance with QQ-P-416, TYPE II, CLASS 2

**CORROSION RESISTANT STEEL:** Chrome plated in accordance with QQ-C-320, CLASS 2 (002-004) or cleaned, descaled and passivated in accordance with QQ-P-35

**TITANIUM ALLOY:** Aluminum coated in accordance with MIL-C-83488, CLASS 3, and lubricated with solid film lubricant in accordance with MIL-L-46010 TYPE I, or no finish.

### **MATERIAL AND FINISH CODE**

C= Steel alloy,4037 4130 8630 or 8740 cadmium plated • S= Steel alloy 8740 cadmium plated • R= Corrosion resistant steel PH13 8Mo chrome plated • P= Corrosion resistant steelPH13 8Mo chrome plated cleaned descaled and passivated • A= Titanium alloy Ti-681-4V, aluminum coated and lubricated with solid film lubricant • T= Titanium alloy, Ti-681-4V, no finish.

**MINIMUM DOUBLE SHEAR STRENGTH IS ALSO CALLED OUT. IF YOU DON'T LIKE IT, CALL YOUR CONGRESSMAN.**

CALL FOR PRICING AND AVAILABILITY.

**MOST SIZES AVAILABLE IMMEDIATELY • \$2 LINE REQUESTED • CALL PLANT FOR QUANTITY DISCOUNTS**

All manufacturer names and numbers are for identification purposes only. In no way are we implying that our parts were made by the manufacturers listed above. Prices, materials, tolerances, and grades subject to change without notice.